

# GM-3445-AB-EN54



## Features

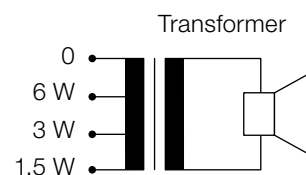
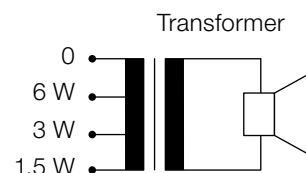
- Ceiling speaker with fire dome
- 2 × 6 W loudspeaker, transformer 100 V
- Two autonomous supply lines enable the feed-in to the loudspeaker
- For background music and voice reproduction

## Specifications

|   |  |
|---|--|
| Loudspeaker system                        | 2 × 1-way                                    |
| Nominal noise power 100 V                 | 2 × 1.5/3/6 W                                |
| Sensitivity (1 W/4 m)                     | 77.8 dB single<br>80.8 dB double             |
| Maximum SPL (6 W/1 m)                     | 106.0 dB single<br>112.0 dB double           |
| Maximum SPL (6 W/4 m)                     | 94.0 dB single<br>100.5 dB double            |
| Frequency range (-10 dB)                  | 162–18'000 Hz single<br>159–16'000 HZ double |
| Coverage angle (-6 dB)<br>(0.5/1/2/4 kHz) | H 180°/180°/80°/71°<br>V 180°/180°/70°/32°   |
| Dimensions (Ø/D)                          | 267/138 mm                                   |
| Cutout                                    | Ø 243 mm                                     |
| Material                                  | Metal  |
| Weight                                    | 2.2 kg                                       |
| Color                                     | White RAL 9010                               |
| Temperature range                         | -20 °C to ~45 °C                             |
| Protection                                | IP55   |
| Measurement environment                   | Near field                                   |

## Electrical connection

2 × 4 pole clamp



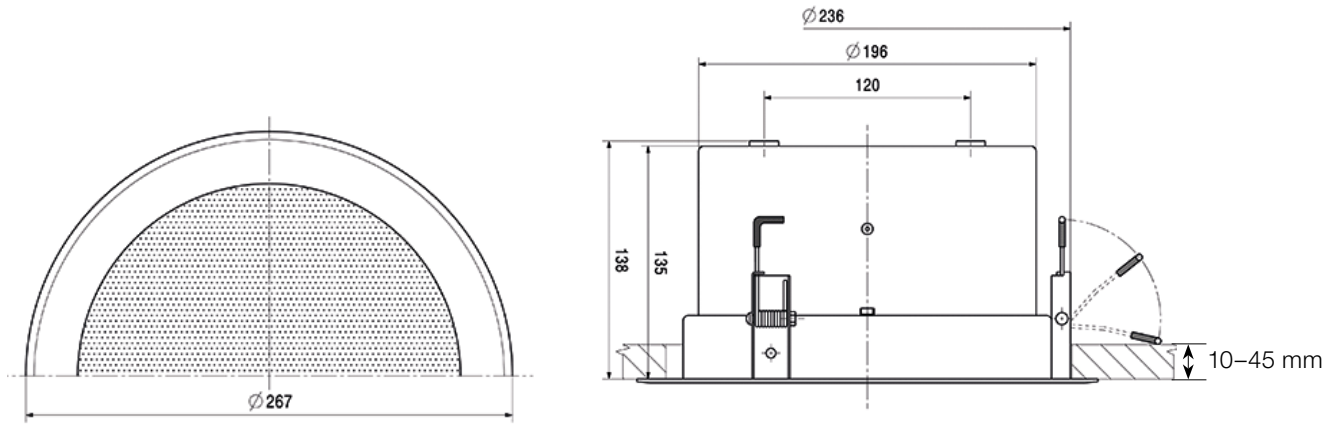
## Certificates

EN 54-24 (1438-CPR-0723)

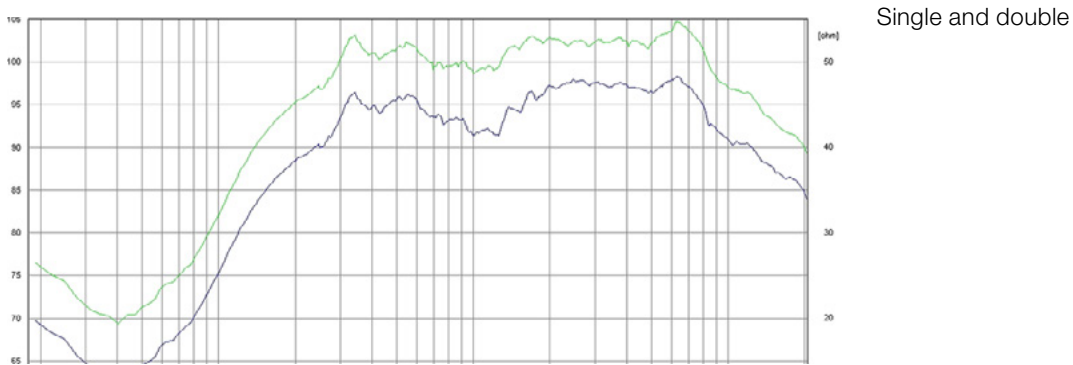
## Ordering information | Accessories

GM-3445-AB-EN54 Loudspeaker accordance to EN 54-24  
 Colors NCS or RAL available on request

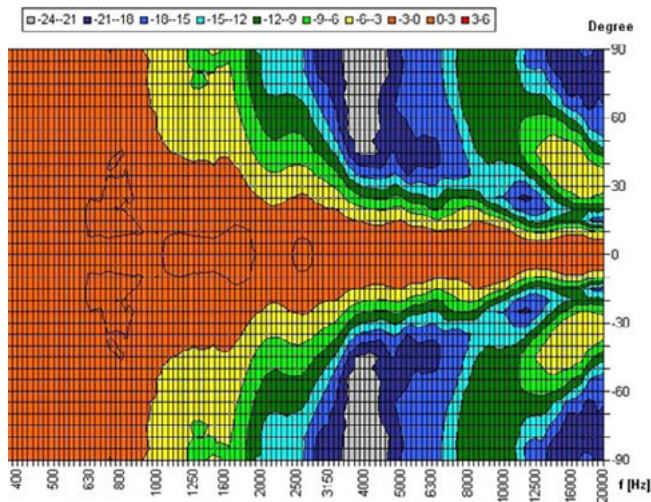
Dimensions and fitting (measuring in mm)



Frequency response | Polar plot



Horizontal (double)



Vertical (double)

