

GM-5020



Features

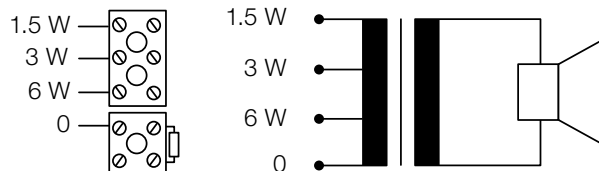
- Square cabinet speaker with metal housing
- 10 W loudspeaker, transformer 100 V
- Easy mounting solution for wall and ceiling
- Very good music and voice reproduction

Specifications

Loudspeaker system	2-way, coaxial
Nominal noise power 100 V	1.5/3/6 W
Nominal impedance 100 V	6667/3333/1667 Ω
Sensitivity (1 W/1 m)	92.2 dB
Maximum SPL (6 W/1 m)	100.0 dB
Frequency range (-10 dB)	190–18'000 Hz
Coverage angle (-6 dB)	H 145°/95°/45°
(0.5/1/2/4 kHz)	V 145°/95°/45°
Dimensions (W x H x D)	195 x 195 x 80 mm
Weight	2.6 kg
Color	White RAL 9003
Temperature range	-20°C to ~45°C
Protection	IP44
Measurement environment	Free-field

Electrical connection

black = 0 | blue = 6 W | white = 3 W | yellow = 1.5 W



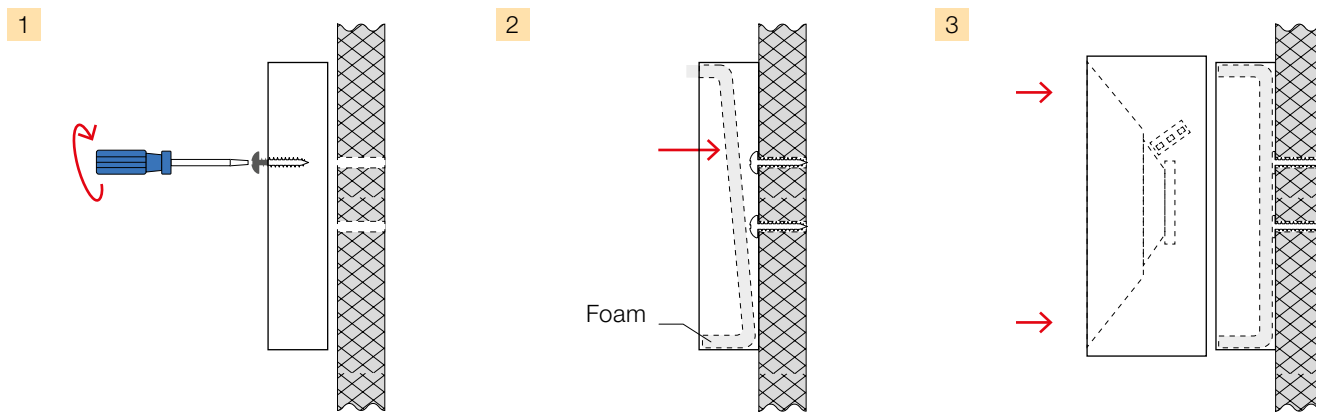
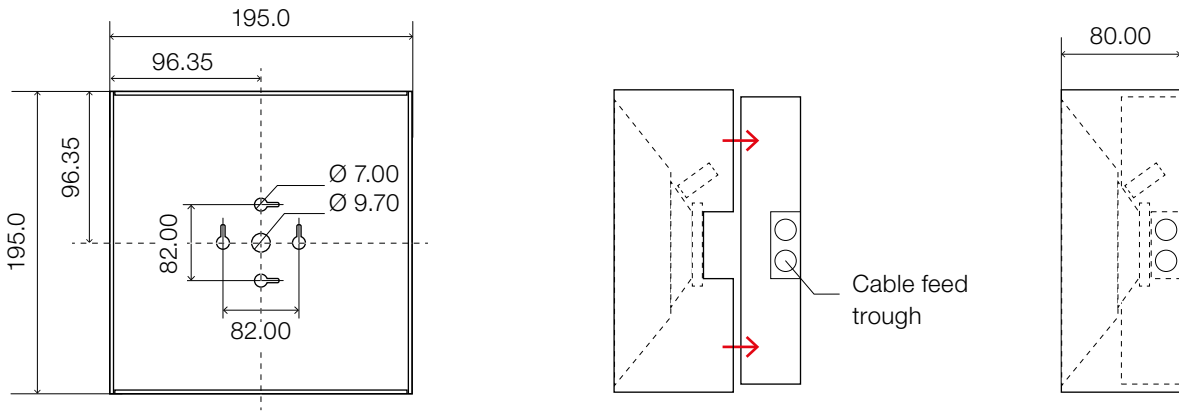
Certificates

EN 60268-5

Ordering information | Accessories

GM-5020	Loudspeaker 100 V, white
GM-5020-SW	Loudspeaker 100 V, black
Colors	NCS or RAL available on request

Dimensions and fitting (measuring in mm)



Frequency response

