

GM-5600-AB-EN54




Features

- Rectangular cabinet speaker with MDF wood housing
- With two separate loudspeakerlines A/B
- 6 W loudspeaker, transformer 100 V
- Prepared cable feedthrough for simple snap & screw mounting
- For music and voice reproduction

Specifications

Loudspeaker system	2 × 1-way
Nominal noise power 100 V	2 × 1.5/3/6 W
Nominal noise power 8 Ω	2 × 6 W
Nominal impedance 100 V	2 × 6667/3333/1667 Ω
Sensitivity (1 W/1 m)	79 dB (1 × 1 W) 81 dB (2 × 0.5 W)
Maximum SPL (12 W/1 m)	102 dB (2 × 6 W)
Maximum SPL (12 W/4 m)	87 dB (1 × 6 W) 90 dB (2 × 6 W)
Frequency range (-10 dB)	200–12'000 Hz
Coverage angle (-6 dB, 1 × 6 W) H	210°/125°/70°/35°
(0.5/1/2/4 kHz) V	240°/155°/90°/45°
Coverage angle (-6 dB, 2 × 6 W) H	200°/185°/125°/85°
(0.5/1/2/4 kHz) V	360°/190°/160°/120°
Dimensions (W × H × D)	194 × 252.5 × 80 mm
Material	MDF wood housing
Weight	2 kg
Color	White RAL 9003
Temperature range	-10 °C to ~55 °C
Protection	IP21C
Measurement environment	Half-space free-field

Certificate

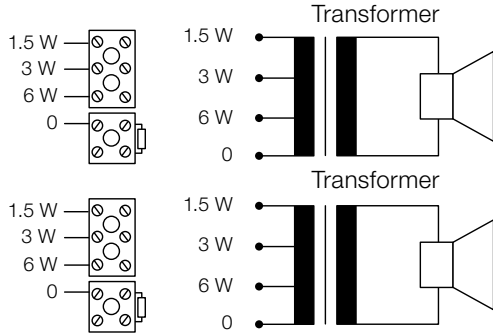
 1438
g+m elektronik ag Buerefeld 12, CH-9245 Oberbüren, Switzerland 18 DoP CPR-63-18-002
EN 54-24:2008 Loudspeaker for voice alarm systems For fire detection and fire alarm systems for buildings Cabinet loudspeaker 6 W and accessories GM-5600-AB-EN54 Type A

Ordering information | Accessories

GM-5600-AB-EN54	Loudspeaker white, EN 54-24
GM-5600-AB-SW-EN54	Loudspeaker black, EN 54-24
Colors	NCS or RAL available on request

Electrical connection

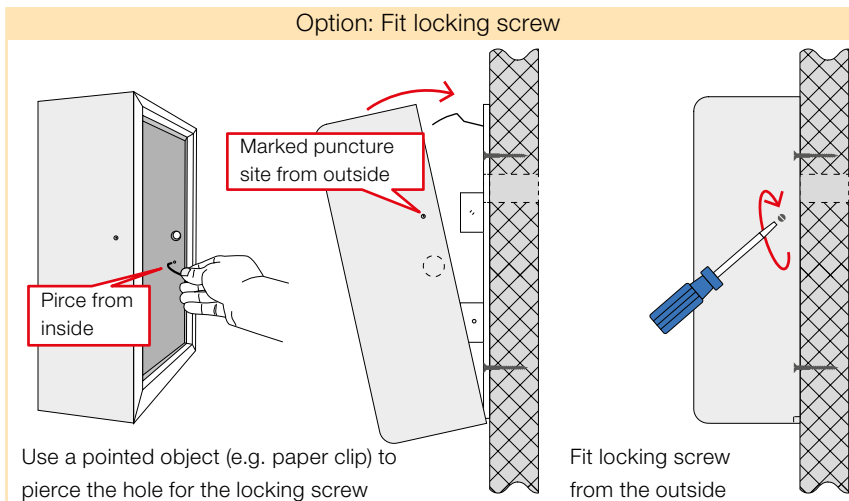
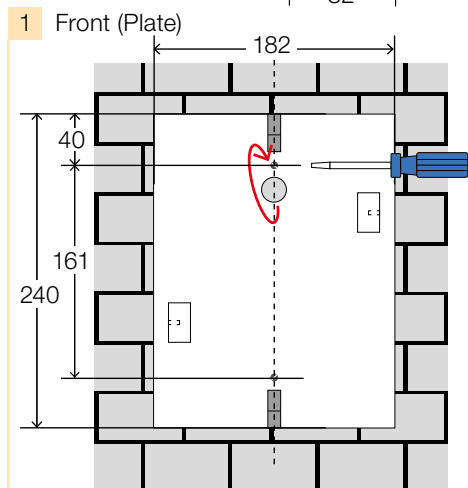
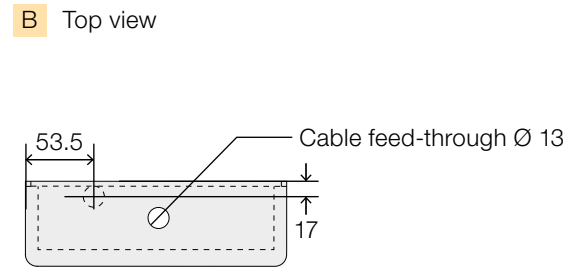
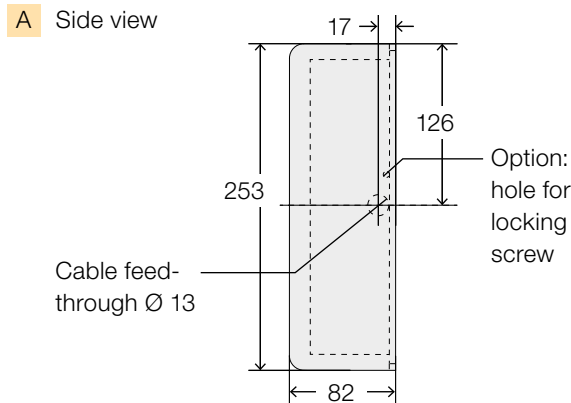
2 x 5 pole clamp



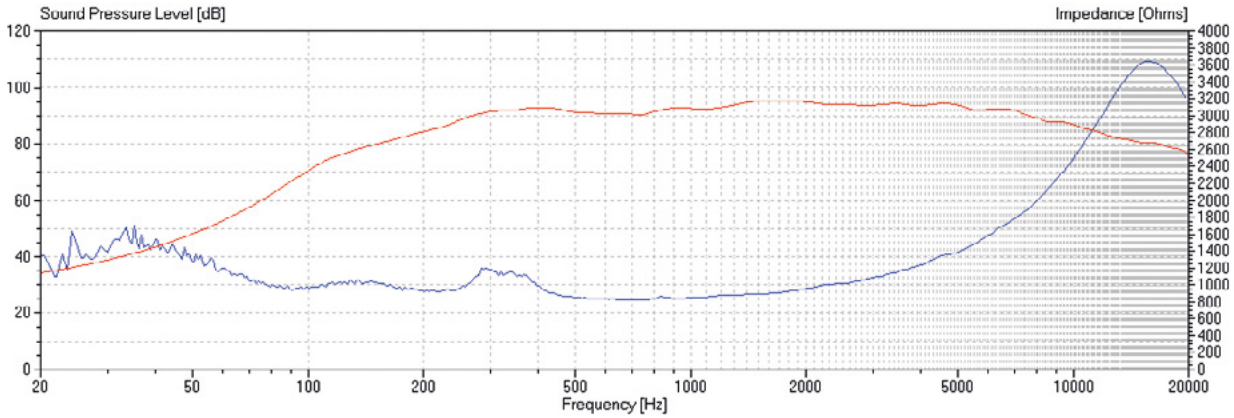
Safety Instructions

Please make sure that the line is not live before connecting the speaker.

Dimensions and fitting (in mm)



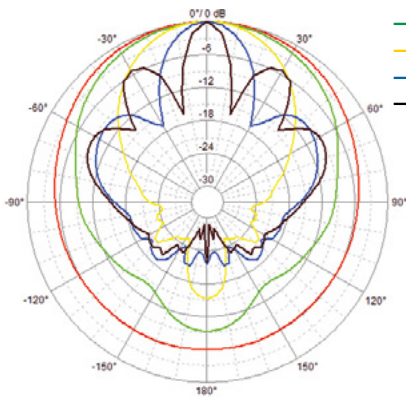
Frequency response | Polar plot



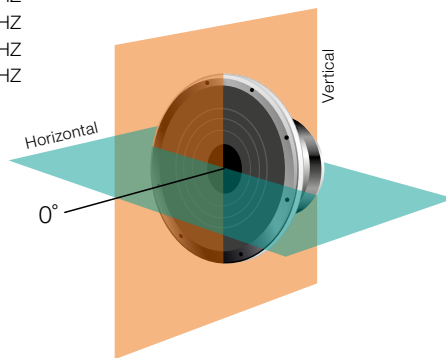
Sensitivity 100 Hz–10 KHz
 1/3 Oct. Pink noise total 1 W/4 m

100 Hz	44 dB	125 Hz	55 dB	160 Hz	60 dB
200 Hz	65 dB	250 Hz	68 dB	315 Hz	73 dB
400 Hz	74 dB	500 Hz	72 dB	630 Hz	72 dB
800 Hz	72 dB	1000 Hz	73 dB	1250 Hz	74 dB
1600 Hz	76 dB	2000 Hz	76 dB	2500 Hz	75 dB
3150 Hz	75 dB	4000 Hz	75 dB	5000 Hz	75 dB
6300 Hz	73 dB	8000 Hz	70 dB	10000 Hz	64 dB

Horizontal



- 500 HZ
- 1 kHz
- 2 kHz
- 4 kHz
- 8 kHz



Vertical

