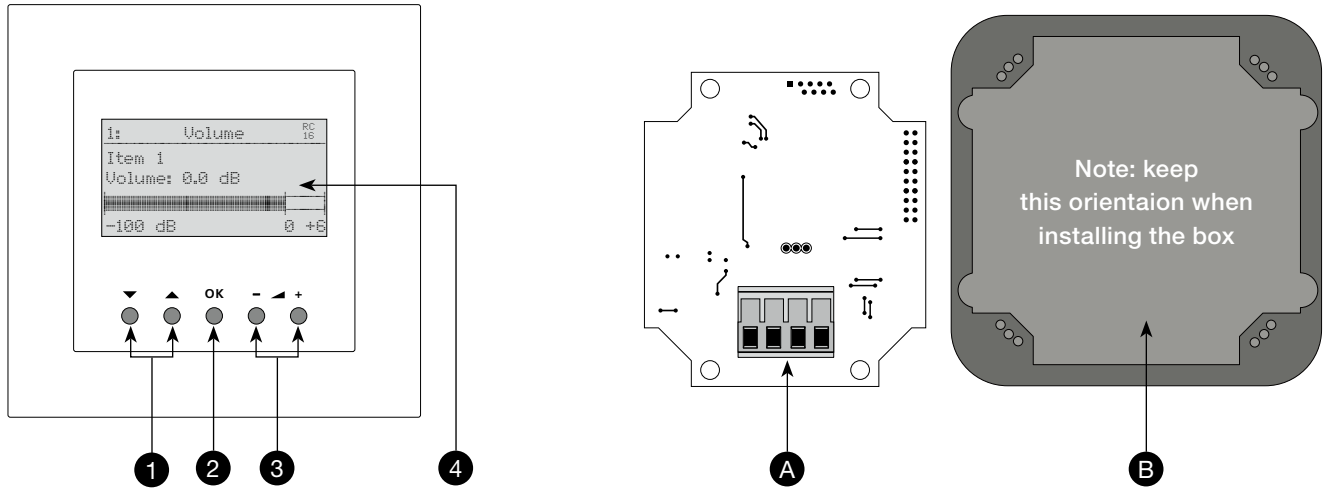


GM-7422

RC16 Remote control unit for volume control and source selection



Front view

- 1 Source selection buttons
- 2 Confirmation button
- 3 Volume control button
- 4 Display

Description

Digital remote control with display for flush mounting. This remote control allows up to 16 sources to be selected and the volume adjusted.

Operating mode

Use the „-“ and „+“ buttons to adjust the volume of the selected source. To change the source, press the «▼» or «▲» button and confirm with OK. To go to the unit settings, press the keys «OK» and «▼» buttons simultaneously for 3 seconds. The individual items (1-5) can now be selected with the «▼» button.

1. RC16 termination (terminating resistor of the RC16 bus): press the «OK» button and select ON or OFF mode.

2. Backlight: press the «OK» button to switch between ON, OFF or Timeout (backlight off after 15 s).

3. Show dB: press the «OK» button to show (ON) or hide (OFF) the dB display in the main menu.

4. RC16 ID: press the «OK» button repeatedly to change the RC16 ID of the unit from 1 to 15.

5. Back: to exit the settings, select Back with the «OK» button.

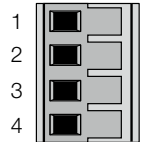
Rear view

- A Connector block RC16 bus
- B Flush mounting box

Connections

Connector block (A)

- 1 Power supply RC16
- 2 Power supply ground
- 3 Data line RC16 A
- 4 Data line RC16 B



Technical Data

Power supply	via RC16
Current consumption (17 V)	28 mA
Max. quantity bus sharing units	16
Volume range	-100 dB to +6 dB
Weight	0.075 kg
Dimensions (W x H x D)	88mm x 88mm x 60mm
Ambient temperature	-5 °C to 40 °C
Humidity	15 % to 90 %, non condensing
Recessed box	HSB-Weibel, 1004

Product variants

GM 7422-AP / 63-1311884-01-01

Accessories

The following accessories are available as optional extras:

Article number	Name	Description
63-1310371-01-01	GM-7428-HUB	Module for distributing the RC16 signal